



*The Coin d'Arvieux-en-Queyras*



Description  
of furnished lodging  
of tourism  
05007-10-00001

Chalet  
near the fountain  
at the Coin  
d'Arvieux-en-Queyras

## General information

Address : 9, Montée Saint-Antoine, Le Coin, 05350 Arvieux-en-Queyras

Classification : Meublé de Tourisme Catégorie \*\*\* (control on 2019/10/02).

Rental owner : Serge Blanc, 22 Impasse du Riou, 05350 Arvieux-en-Queyras  
Cellular : 06.81.03.96.29. Web : <https://www.vacancesqueyras.fr>

Rental agency : Office de Tourisme du Guillestrois et du Queyras,  
05350 Château Ville Vieille  
Phone : 04.92.46.76.18. Web : <https://lequeyras.com/>

## Main housing features

Occupants nominal number : 4

Independent chalet with single-storey accommodation (not intended for people with reduced mobility).

Three rooms for a total area of 45 m<sup>2</sup>, with kitchen area in the main room.

Resident has private enjoyment of a 20 m<sup>2</sup> terrace with mountain view and of a closed garage for one car.

Pets allowed (local law do not allow roaming of pets).



## Furnished accommodation situation in the locality

The furnished apartment is located in the hamlet Le Coin (altitude 1600 m), 1 km from the village of Arvieux. Particularly quiet hamlet, off the main road, without neighborhood inconvenience.

At the entrance to the hamlet there is free public parking as well as a free public playground with slide, turnstile, swing, volleyball and bowling alley.

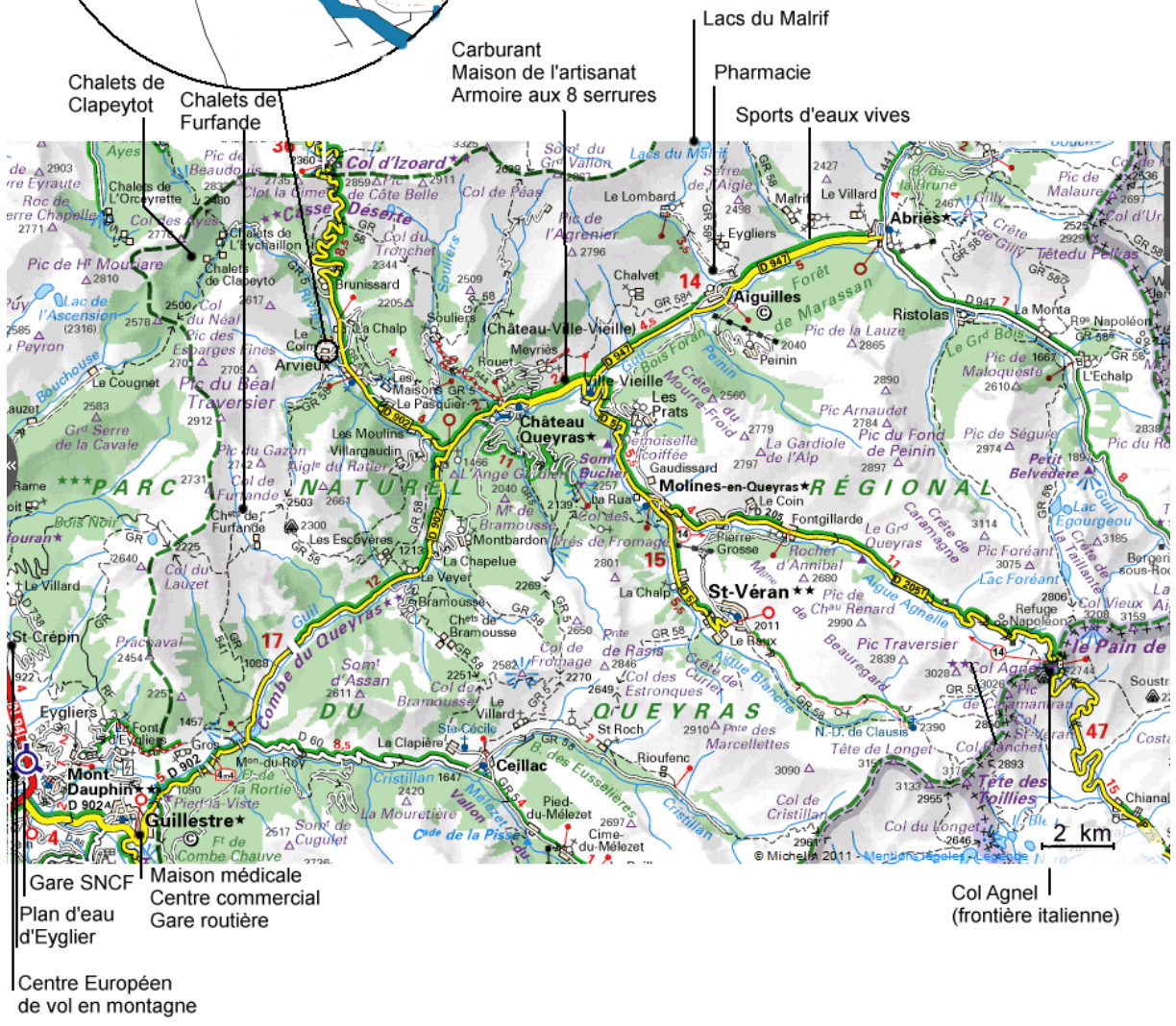
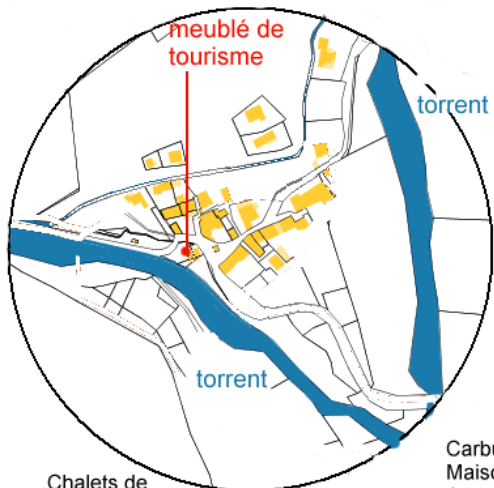


Distance from the main centers of tourist interest:

At the foot of the forest,  
La Chalp ski slopes 1km away,  
Le Guil River 5 km away,  
Mountain lakes 1 km away, Eyglie lake 30 km away, Serre-Ponçon lake 45 km away,  
Alpine chalets 10 km away.

Distance from main services:

Doctors and pharmacy in Aiguilles (14km), Hospital in Briançon (30 – 55 km),  
Montdauphin-Guillemestre SNCF rail station (29 km ),  
Guillemestre bus station (23 km),  
Gas station in Ville-Vieille (9.5 km),  
Restaurant, bakery, grocery store, postal agency, bank ATM in Arvieux (1km),  
Supermarket (Intermarché) in Ville-Vieille (8 km),  
Shopping center (Carrefour Market, Intermarché, Cinema) in Guillemestre ( 23 km).



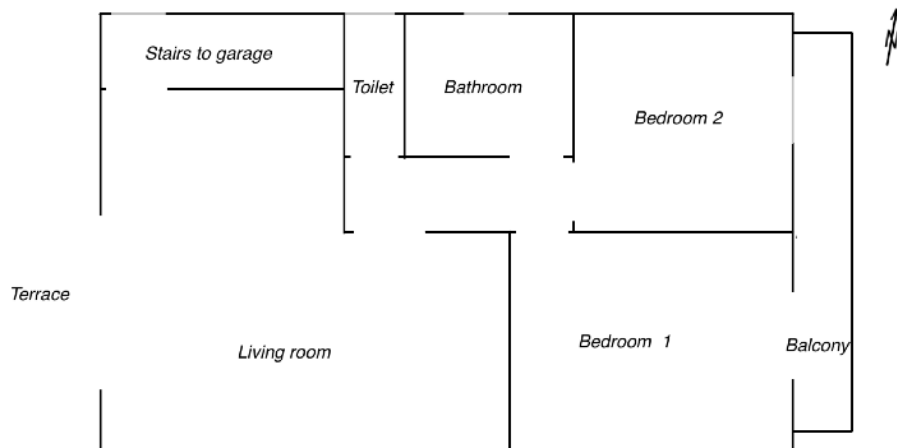
- Gare SNCF
- Maison médicale
- Plan d'eau
- Centre commercial
- d'Eyglier
- Gare routière
- Centre Européen de vol en montagne

## Description of the furnished apartment

Independent construction, regularly maintained and equipped.

Electric fluid inertia radiator in each room.

### Layout of rooms :



### Living room :

South and West exposures,  
Surface 20,5 m2,

Opening french window  
on terrace and 2 windows  
with landscape views,

Fransat satellite TV,



Convertible sofa (1 bed),

Table and six chairs.



### **Bedroom 1 :**

South and East exposure,  
Surface 10,9 m<sup>2</sup>,

A window with a landscape  
view,  
a french window with  
hamlet view and access to a  
balcony (5m<sup>2</sup>),

One bed 140x190 cm,  
two 90x190 cm bunk beds  
(the upper bed cannot be  
occupied by a child under  
six years old),

Draw sheets for mattresses  
and pillows protectors,  
duvets.



### **Bedroom 2 :**

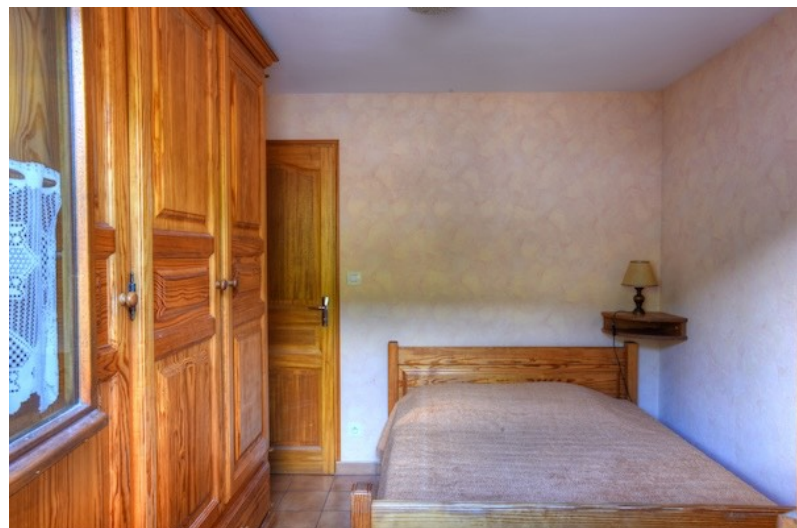
East exposure,  
Surface 8 m<sup>2</sup>.

A hamlet view window.

One bed 140x190 cm.

Closet.

Draw sheet for mattress and  
pillows protectors,  
duvet.



**Kitchen layout :**

Three-burner induction hob,

Cold door oven and micro-wave oven,

Refrigerator with freezer compartment,

Dishwasher,

Washing machine 6 kg.

Complete cookware set with electric pressure cooker.

Household appliances:

blender, coffee maker,

toaster, kettle.

**Sanitary equipment :**

Sink with mixer, bidet with mixer, shower. Bathmat.

Separate toilet.

**Miscellaneous equipment :**

Outdoor/indoor drying racks, ironing board and iron, vacuum cleaner, hair dryer.

Baby bed and baby chair on request.

## Services made available, at no extra charge

### **Household :**

Supply of environmentally friendly cleaning products.

(The accommodation must be left clean, household is not included in the price).

### **Documentation :**

- Hiking guides and maps for the Arvieux valley and the Queyras park. Specialized guides (via ferrata, geology, ...) are available on request.
- Leaflets and one book describing the Queyras Regional Natural Parc.

### **Internet access :**

- Wireless local network (WiFi).
- On request, provision of a 4G modem (the user must, in this case, have a “data” SIM card provided by its operator).

### **Car parking :**

Private closed garage for one vehicle, located under the accommodation.

A free public parking area is located at the entrance to the hamlet, approximately 50 m from the accommodation.

## Paid services, on request

### **Laundry :**

- Provision of bed linen: fitted sheets, duvet covers, pillowcases (in this case, the beds are made on arrival).
- Provision of bathroom linen (towels and washcloths).
- Provision of kitchen linen (tea towels, napkins).

**Household :** Cleaning of the accommodation at the end of the stay.

---



# Annexe V

## DECISION DE CLASSEMENT

dans la catégorie des meublés de tourisme



**Le classement du meublé ci-dessous est  
pour un classement  
pour une capacité en nombre de personnes de**

**Accordé  
3\*  
4**

### Identification du meublé

Dénomination commerciale, le cas échéant	Chalet Prés la Fontaine
Adresse du meublé	Le Coin
Code postal	05350
Ville	ARVIEUX
Numéro de classement*	00504005-00719-0122

### Identification du loueur

Nom	BLANC
Prénom	SERGE
Adresse	Clos des Trigonelles " - Boite 18
Code postal	01120
Ville	BRUXELLES
Pays	Belgique
Téléphone	06 81 03 96 29
e-mail	serge.blanc@vacancesqueyras.fr

### Identification du mandataire (le cas échéant)

Nom	-
Prénom	-
Raison sociale	-
Adresse	-
Code postal	-
Ville	-
Téléphone	-
e-mail	-

Le classement est délivré pour cinq ans jusqu'au 30/09/24  
Fait à : Le :  
Ceillac 02/10/19

Timbre de l'organisme évaluateur

Nom et signature du représentant de l'organisme évaluateur

<p><b>Office de Tourisme</b> <b>Guillestrois QUEYRAS</b> à la hauteur de l'essentiel Service classement des meublés Place Philippe Lamour / 05 600 Ceillac Tél. : 07.88.90.24.09 classementmeubles@guillestroisqueyras.com</p>	
--	--

Avertissement : Au terme de l'article D. 324-4 du code du tourisme, le loueur ou son mandataire dispose d'un délai de quinze jours à réception de la présente proposition pour refuser le classement. A l'expiration de ce délai et en l'absence de refus, le classement est acquis.

\* 4 chiffres, rang de classement par l'organisme, le Xème meublé classé par l'organisme dans l'année